

# *NetMap: Estuary Mapping (Puget Sound)*



4878 ft

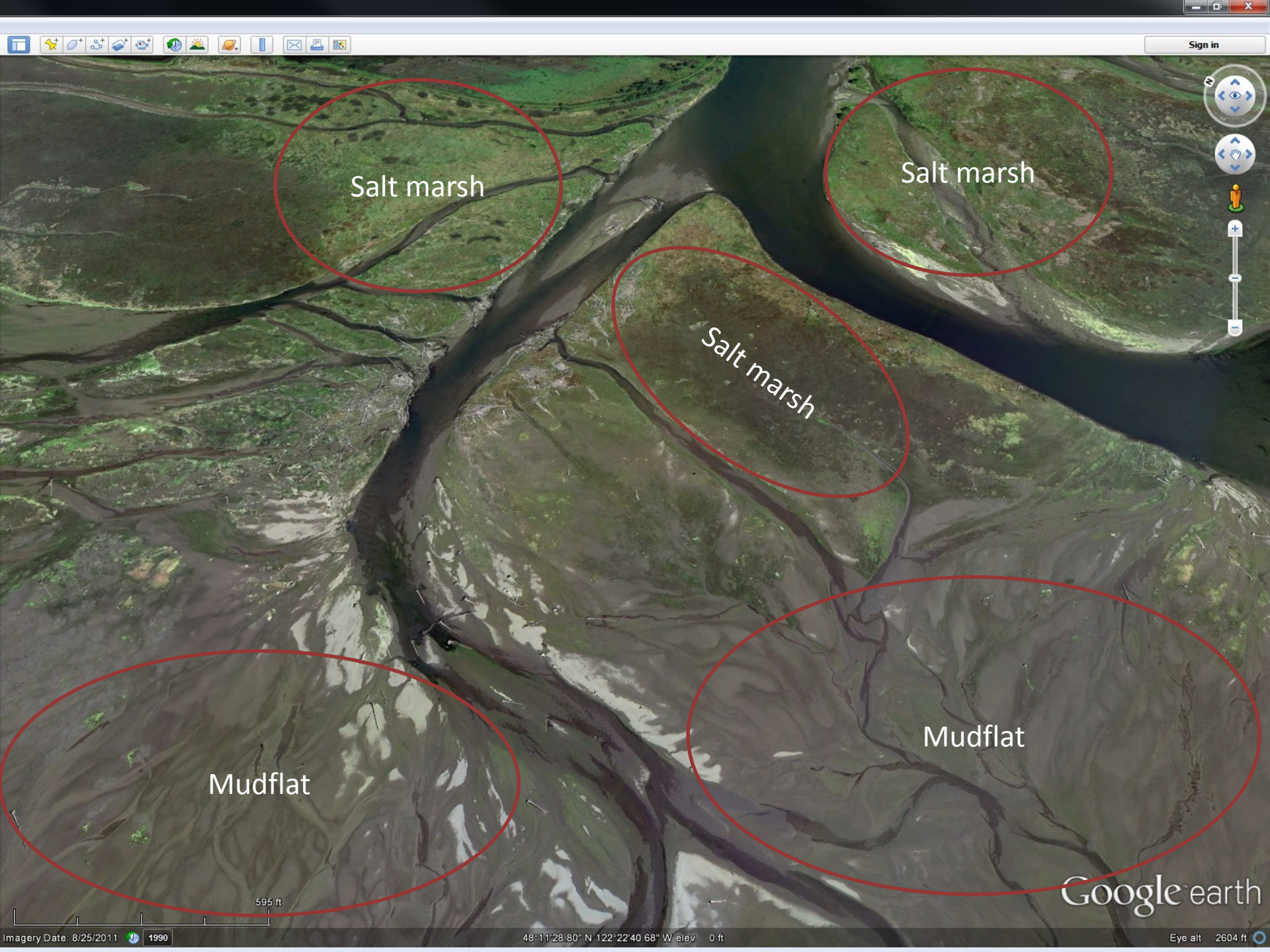
Image © 2013 TerraMetrics  
© 2013 Cnes/Spot Image  
Image U.S. Geological Survey

Google earth

Eye alt 11691 ft

2003





Salt marsh

Salt marsh

Salt marsh

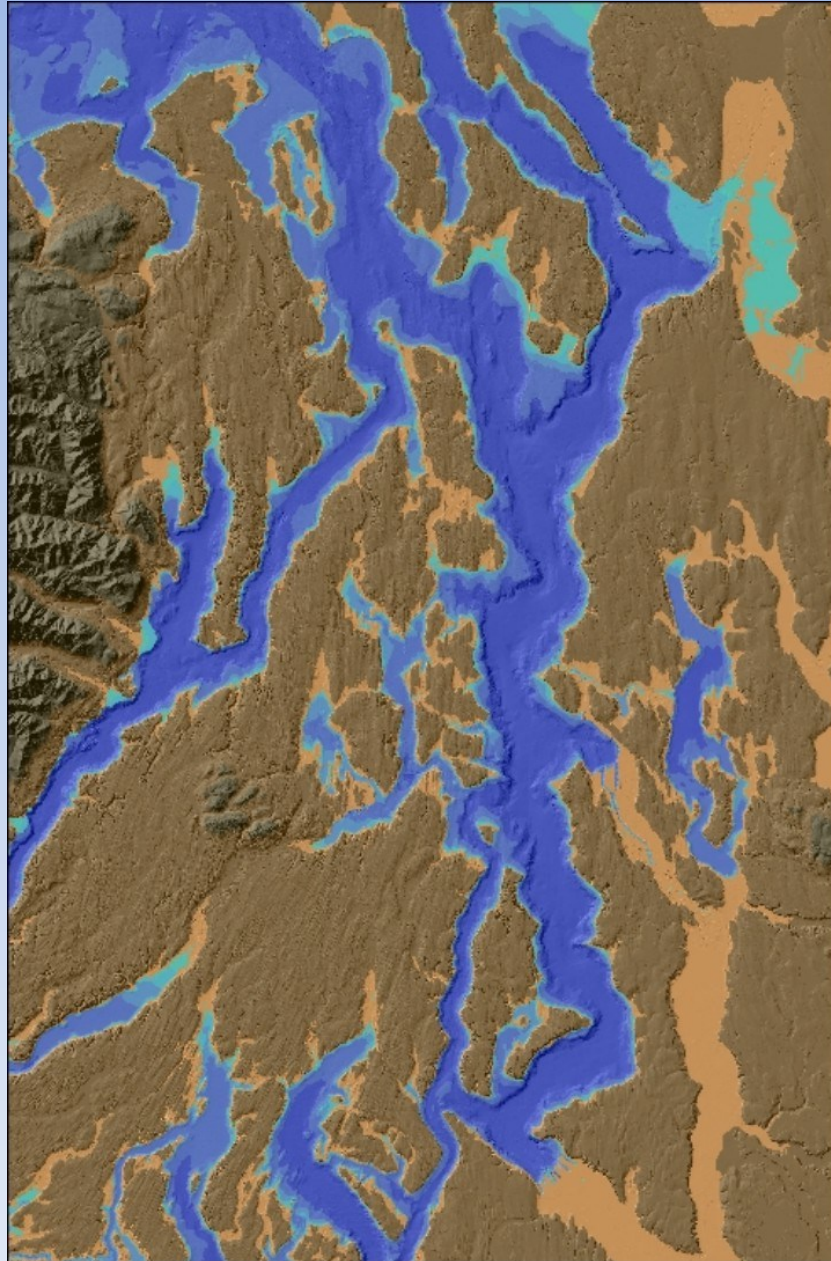
Mudflat

Mudflat

Google earth

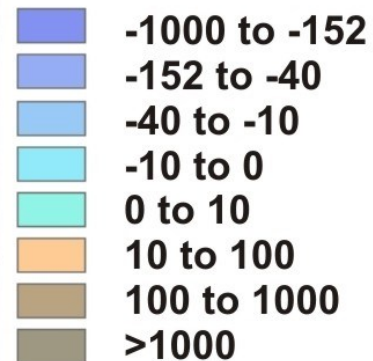


# *Model*

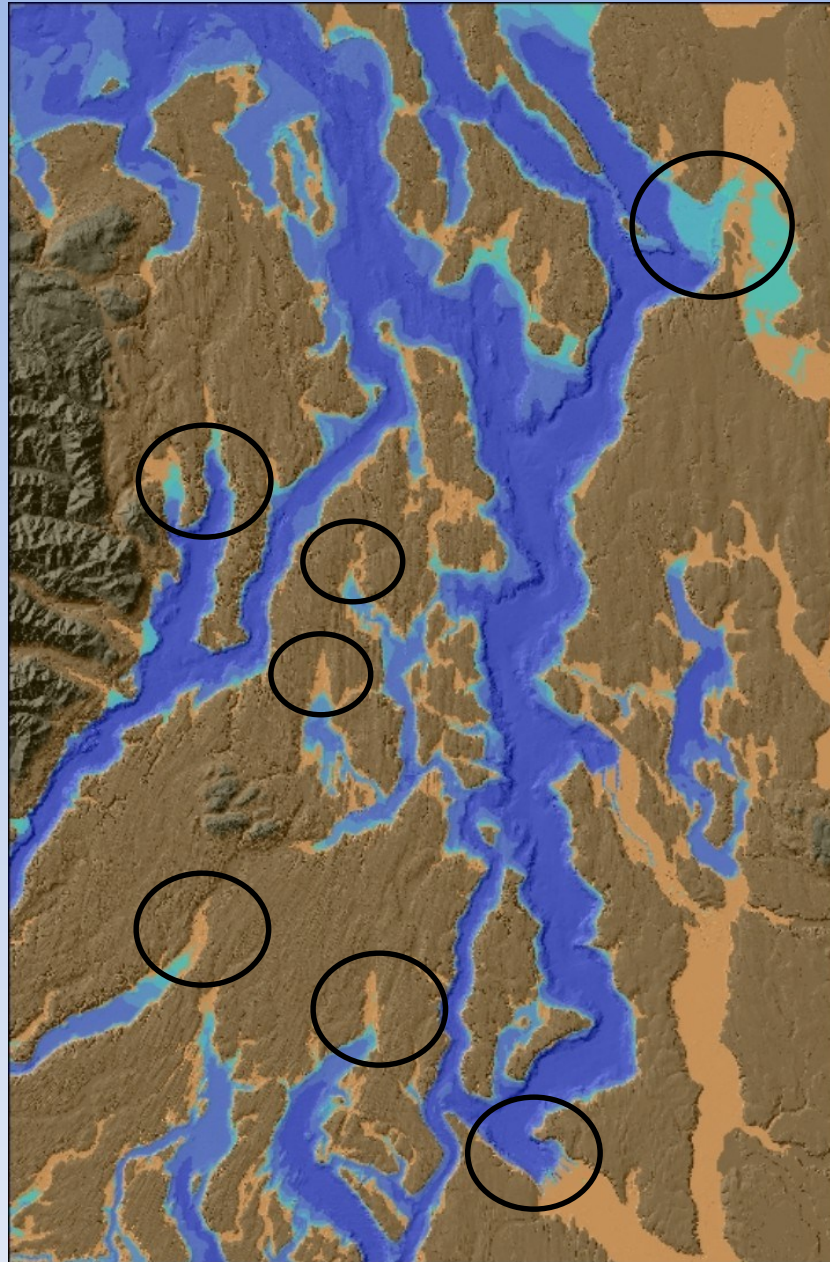


- merged DEM (LiDAR)*
- tidal gauge data*
- proportion inundation  
(0 – 100%)*
- logistic regression model  
(inundation vs estuary hab)*

## **Merged LiDAR DEM and Bathymetry (ft)**

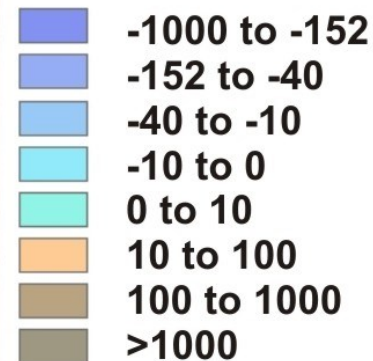


# *Model*



- merged DEM (LiDAR)*
- tidal gauge data*
- proportion inundation  
(0 – 100%)*
- logistic regression model  
(inundation vs estuary hab)*

## **Merged LiDAR DEM and Bathymetry (ft)**





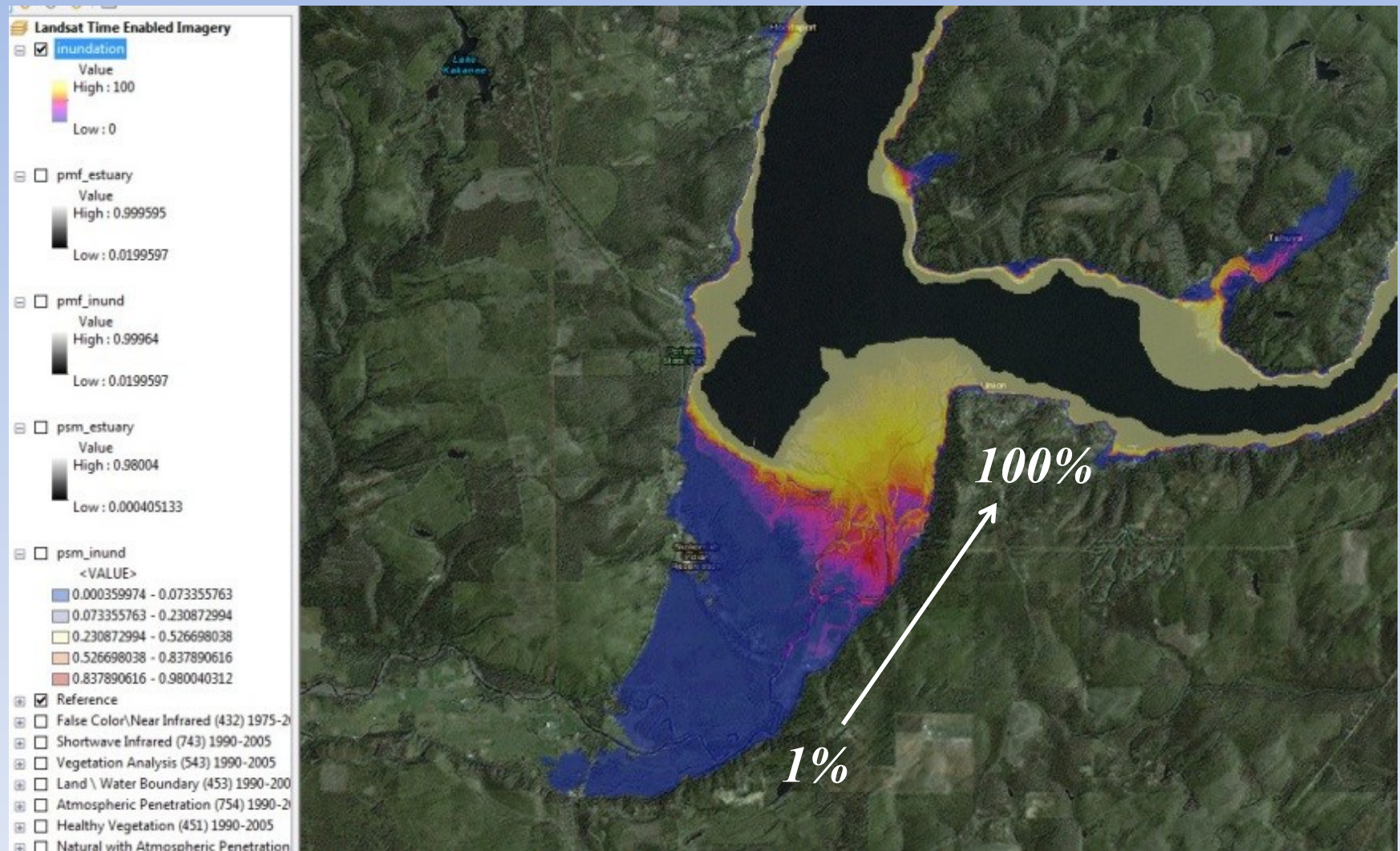
# *Results*

Skokomish  
River  
estuary



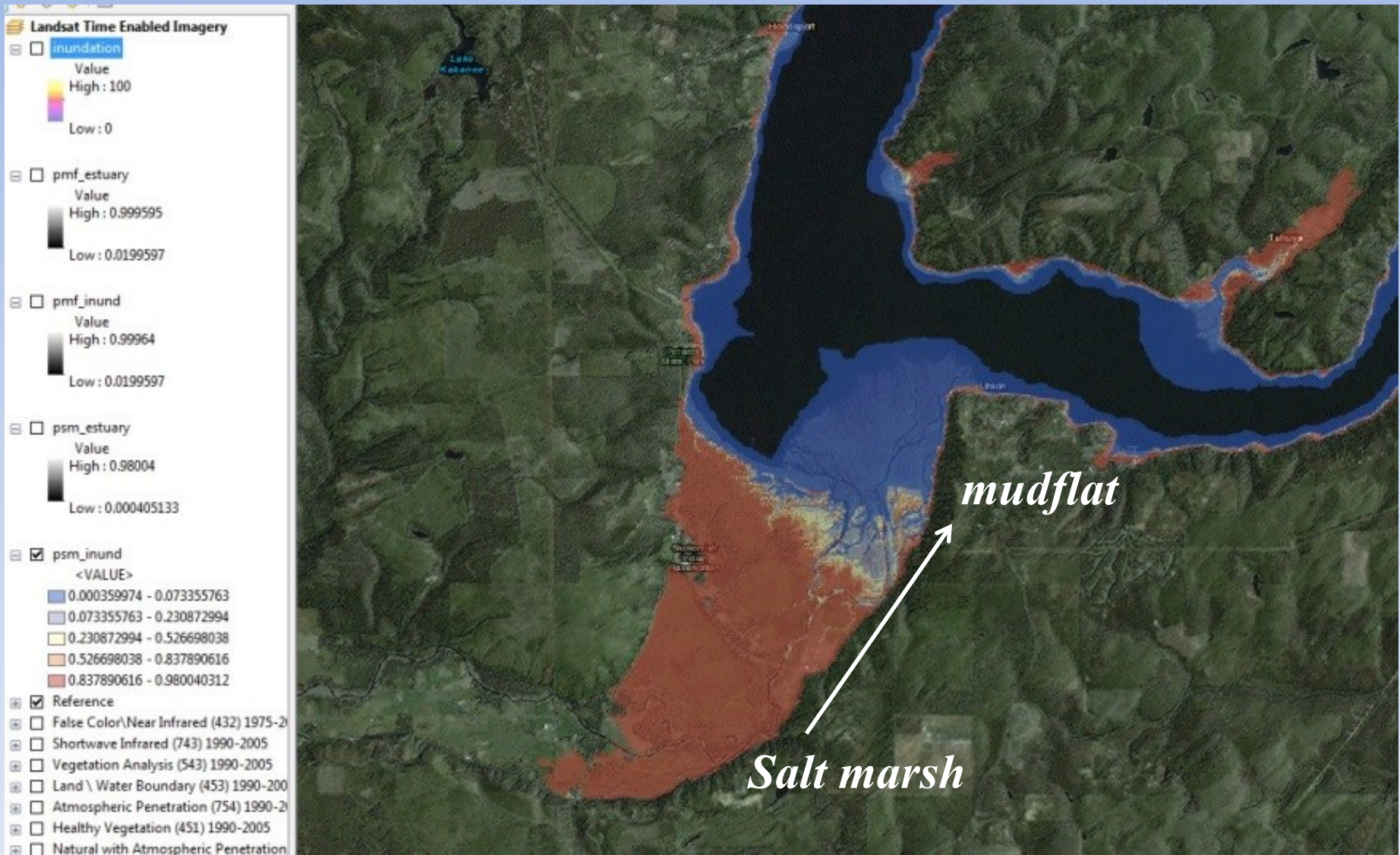


# Percent Inundation



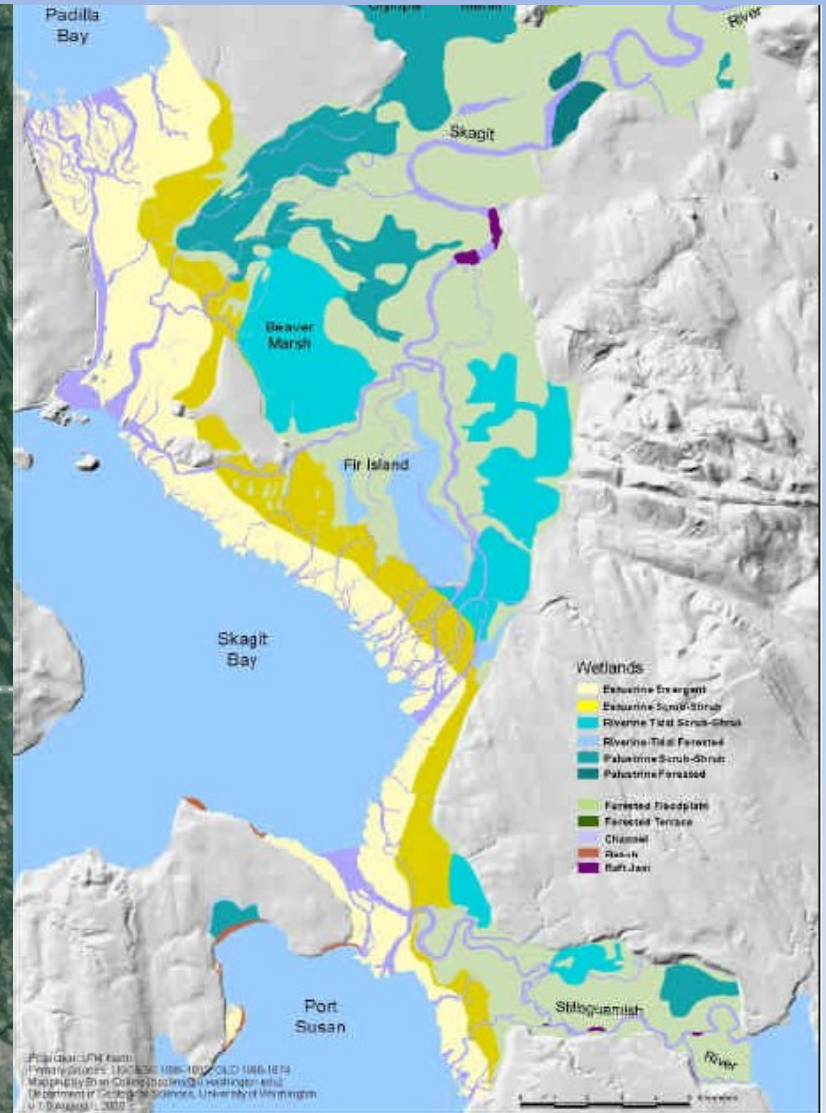
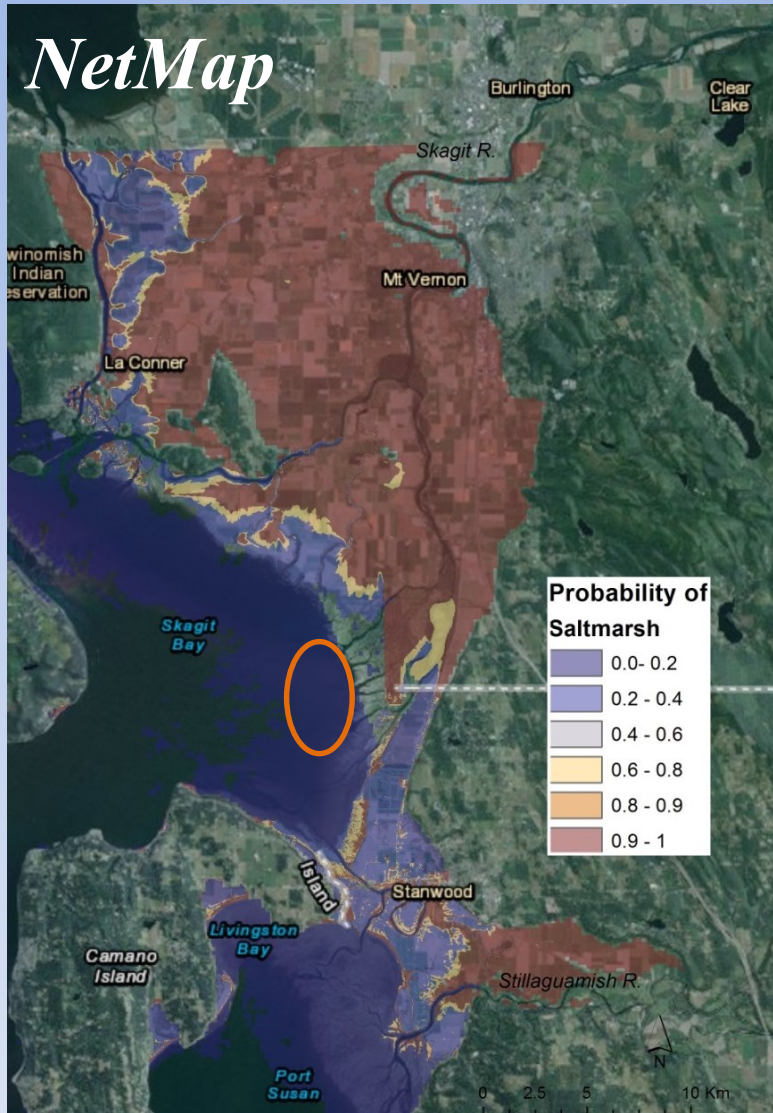


# *Probability salt marsh*





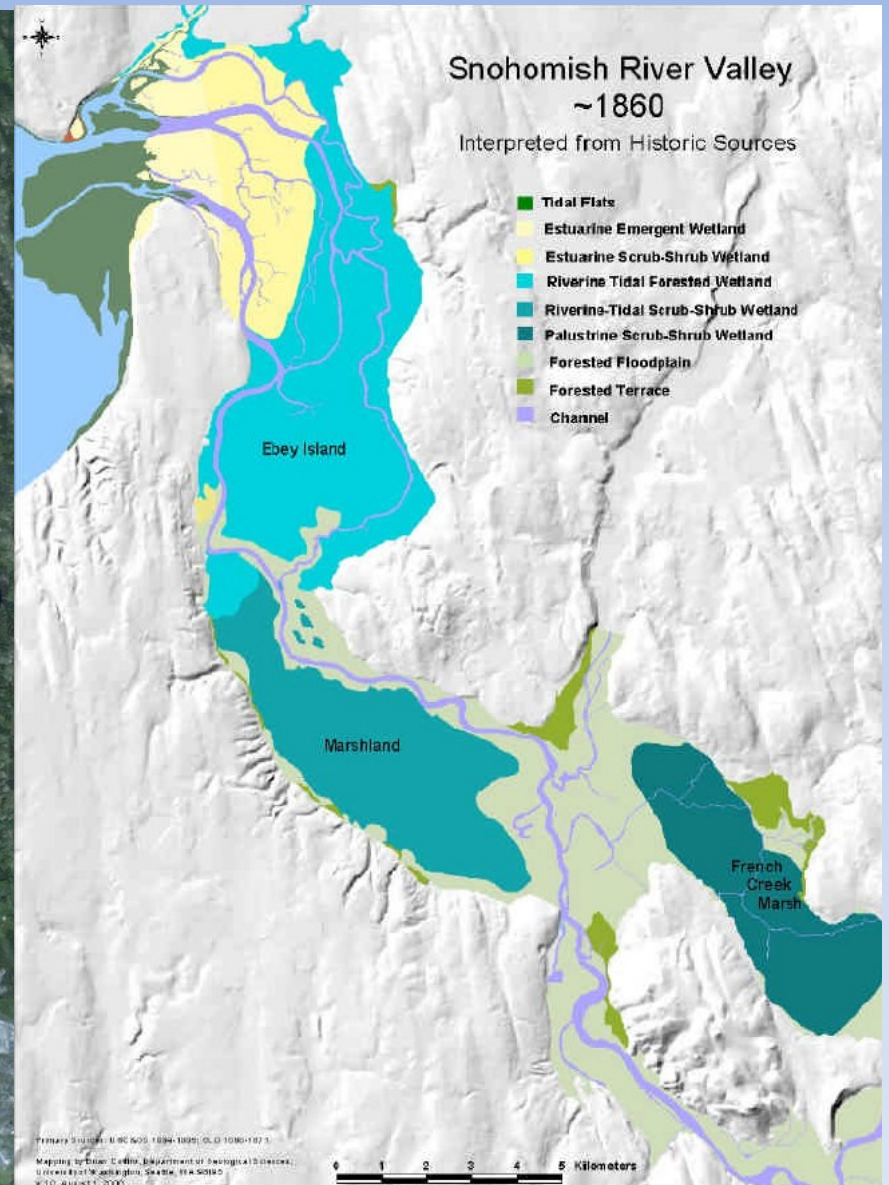
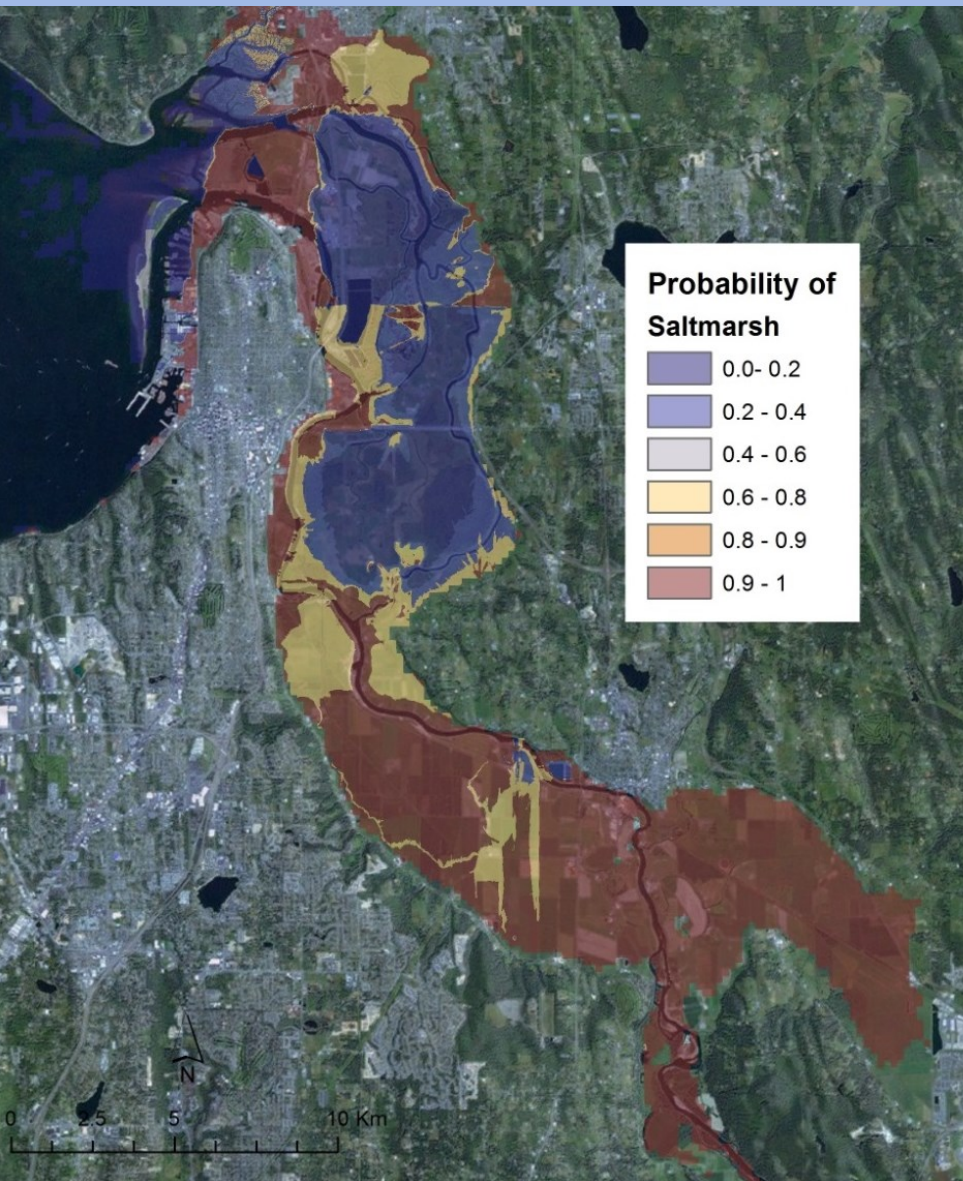
# Skagit Delta



*Collins 2008*



# *Snohomish Delta*

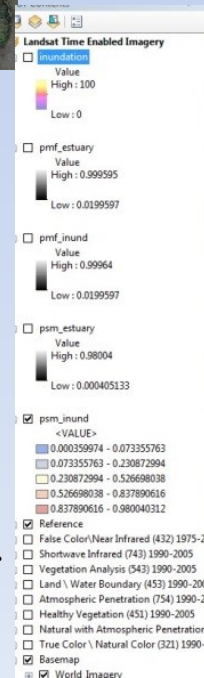
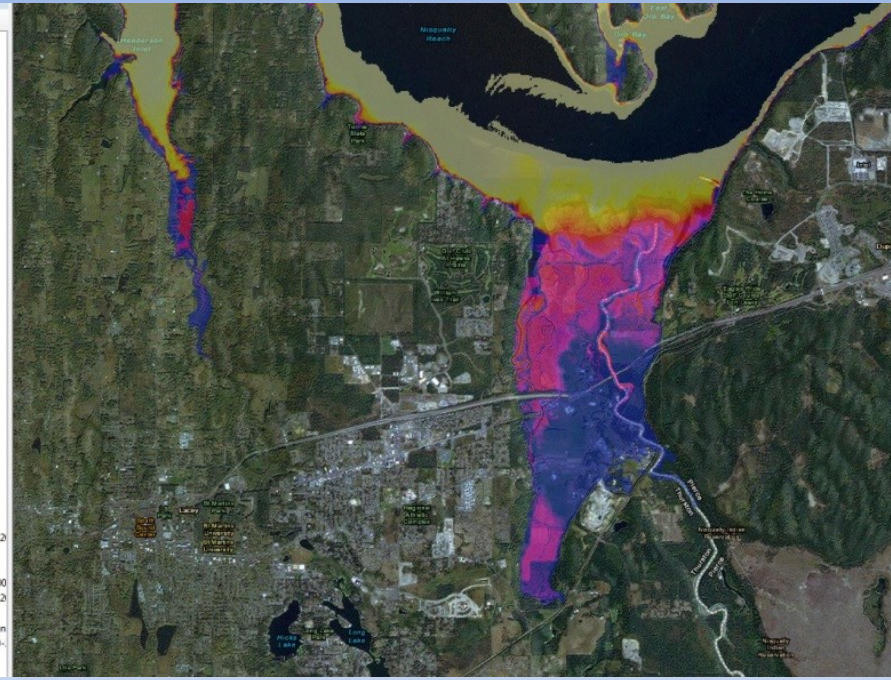
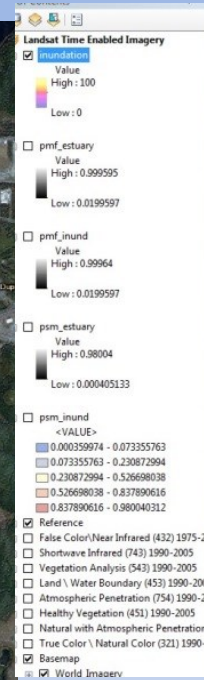
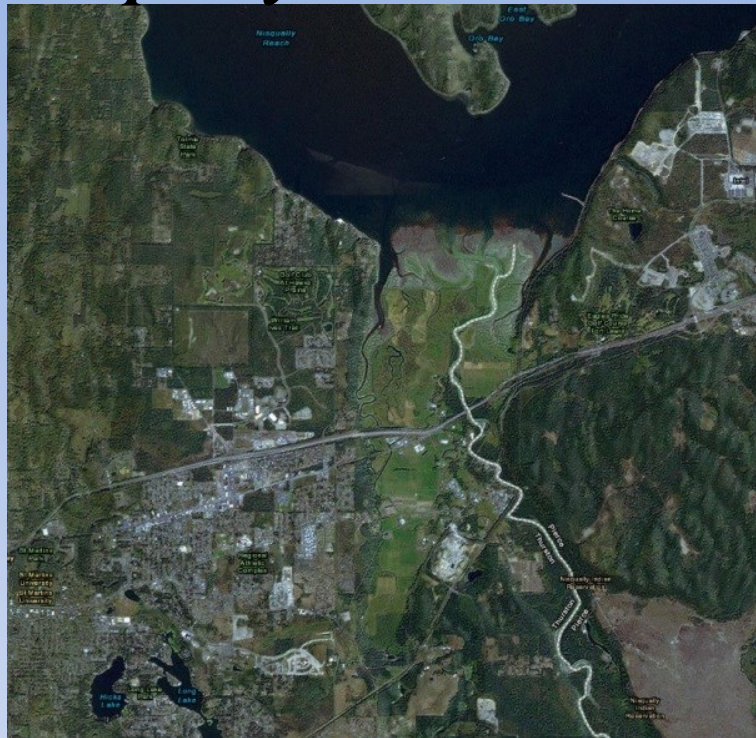


*Collins 2008*



# Nisqually Delta

# Inundation



*Probability of  
salt marsh*

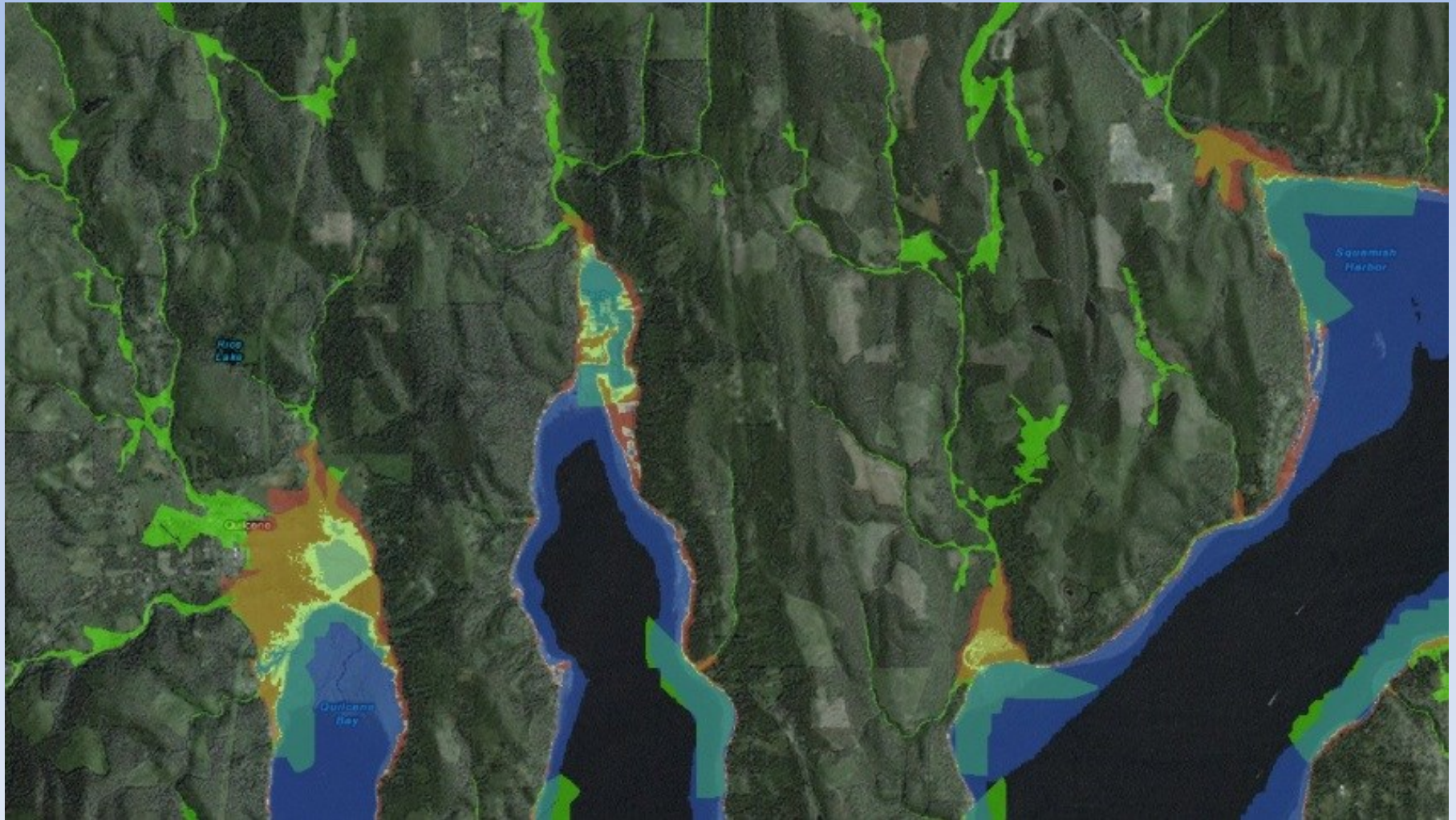


# *Duwamish River estuary/floodplain (RIP)*





# *New classification schemes: estuary + floodplain*





# *New classification schemes: estuary + floodplain + fish hab*

