

# HOONAH NATIVE FOREST PROJECT

The Hoonah Native Forest Partnership (HNFP) is a science-based, landscape scale, community forest approach to watershed planning and project implementation whose overall goal is to achieve a measurable and resilient blend of timber, salmon and deer production, local economic diversification and improved watershed health.

The HNFP core partners are Sealaska, Huna Totem, The Hoonah Indian Association, The City of Hoonah, The Nature Conservancy, the Alaska Department of Fish and Game Subsistence Division and the US Forest Service. The core partners recently submitted a proposal to the NRCS Regional Conservation Partnership Program (RCPP) and were successful in securing 4 years of funding to support highly inclusive collaboration, developing and applying state of the art land management tools and an innovative, watershed-scale planning approach to balancing economic, social and ecological outcomes.

The HNFP project area is approximately 150,000 acres covering all complete watersheds within which Sealaska and Huna Totem lands exist (see attached map).

We believe that the Hoonah Native Forest project is a model for providing long-term benefits to land owners, managers and community residents that can be replicated in similarly-situated locations throughout Southeast Alaska. There are a number of immediate opportunities that we are excited about:

- ✓ protecting and enhancing opportunities for traditional cultural practices such as subsistence hunting, fishing and berry-picking;
- ✓ reducing local economic leakages in the food, energy and construction sectors;
- ✓ developing local workforce and contractors for stewardship activities such as young growth & salmon stream inventories, road maintenance, forest thinning for wildlife habitat & timber enhancement, resource monitoring; and,
- ✓ developing local business opportunities in renewable energy development and delivery, recreation and tourism, timber and non-timber forest products such as commercial blueberries.



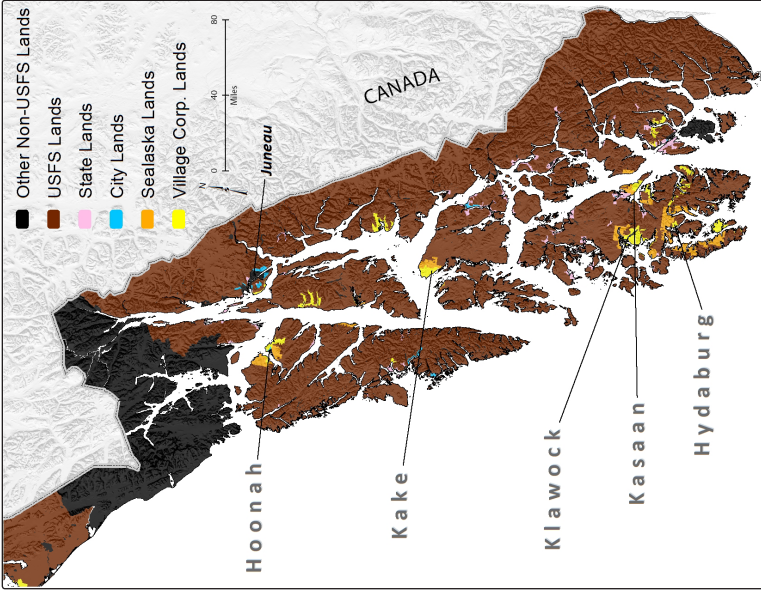
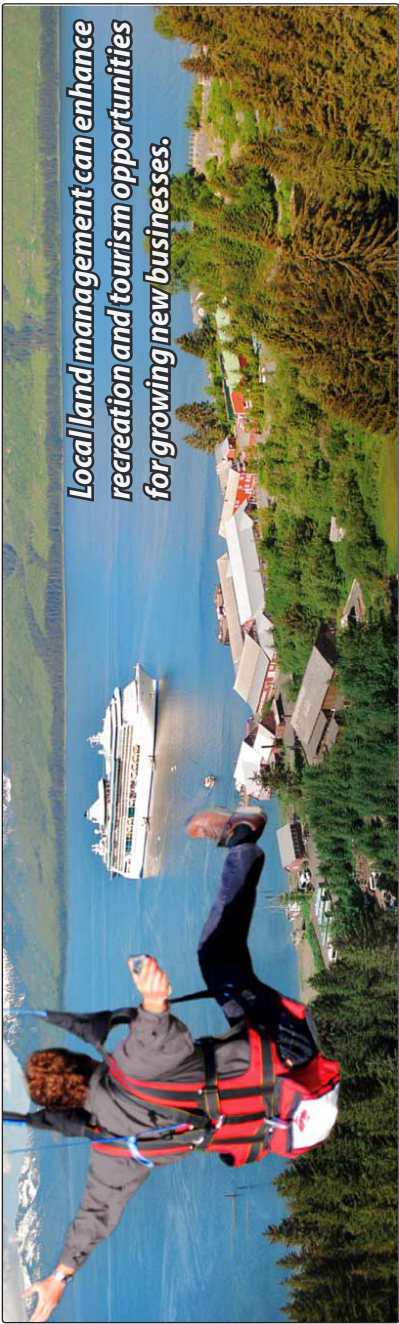
*Local thinning crews can enhance stands for subsistence wildlife habitat and future timber values.*



*Subsistence and commercial blueberry-picking opportunities can be enhanced through stewardship activities.*



*Local use firewood can be a by-product of wildlife habitat and timber stand enhancement.*



Left: The Hoonah Native Forest Project Area encompasses approximately 150,000 acres surrounding the community of Hoonah and includes lands managed by the USFS, Sealaska Corp., Huna Totem Corp. and the City of Hoonah.

Above: Map of Southeast Alaska showing a number of rural community locations that are surrounded by similar land management partnerships to the Hoonah Native Forest Project. We believe that this "Community Forest" approach to collaborative land management is replicable in these locations and can serve to enhance the social, economic and environmental conditions at both the community and regional scale.

